

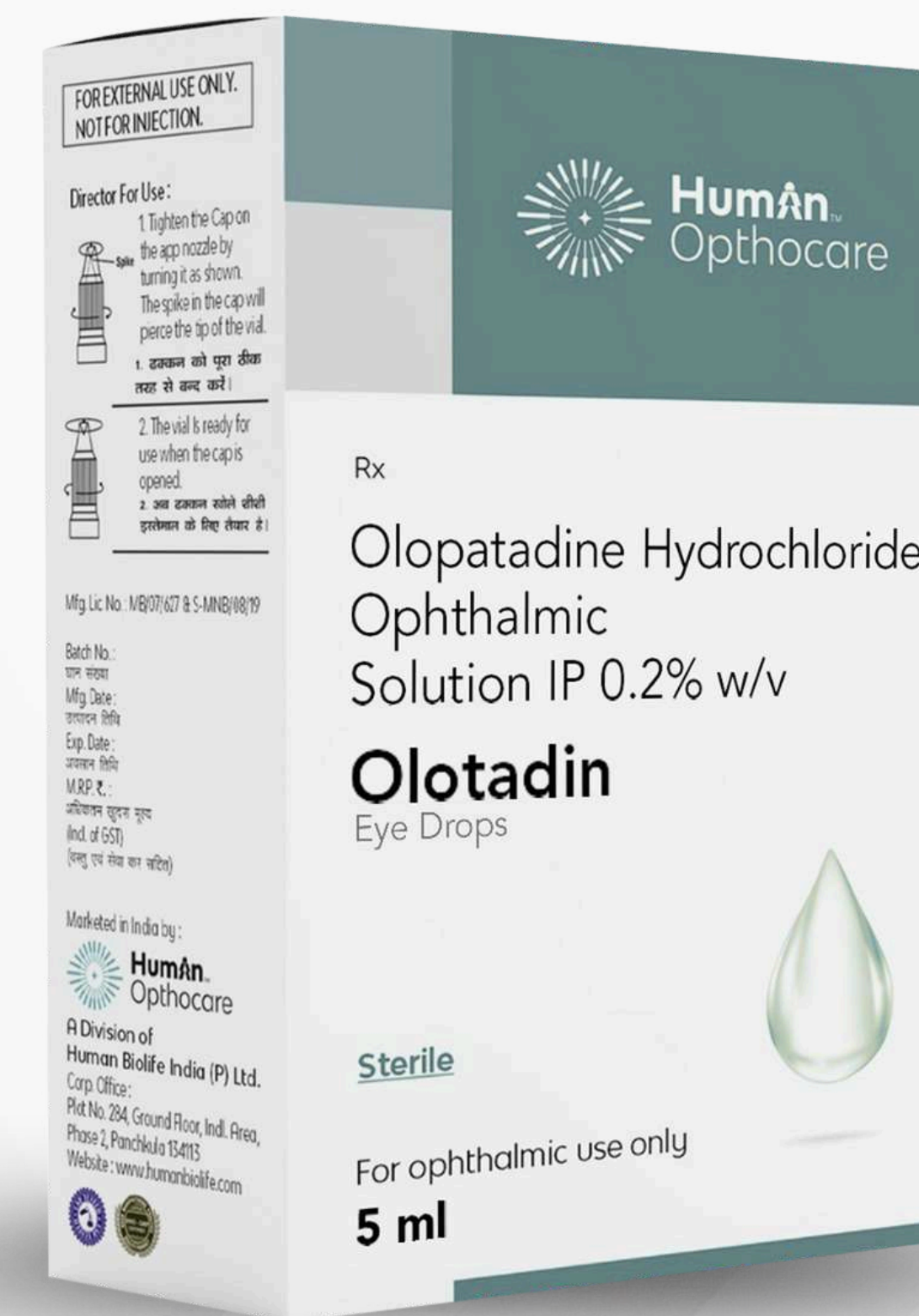
OLOTADIN EYE DROPS

Olopatadine Hydrochloride Ophthalmic Solution IP 0.2% w/v

Relief from Allergy. Comfort for Eyes.

Marketed by: Human Opthocare
A Division of Human Biolife India Pvt. Ltd.

www.humanopthocare.com



OLOTADIN Eye Drops

Olopatadine Hydrochloride 0.2% w/v

Dual-acting

Antihistamine + Mast Cell Stabilizer

Long-lasting protection

Against allergic symptoms



- Once-daily dosing convenience
- Sterile & safe formulation

Why Olopatadine?

Dual Mechanism of Action



Blocks histamine H1 receptors

Rapid relief of itching, redness & watering



Stabilizes mast cells

Prevents release of inflammatory mediators

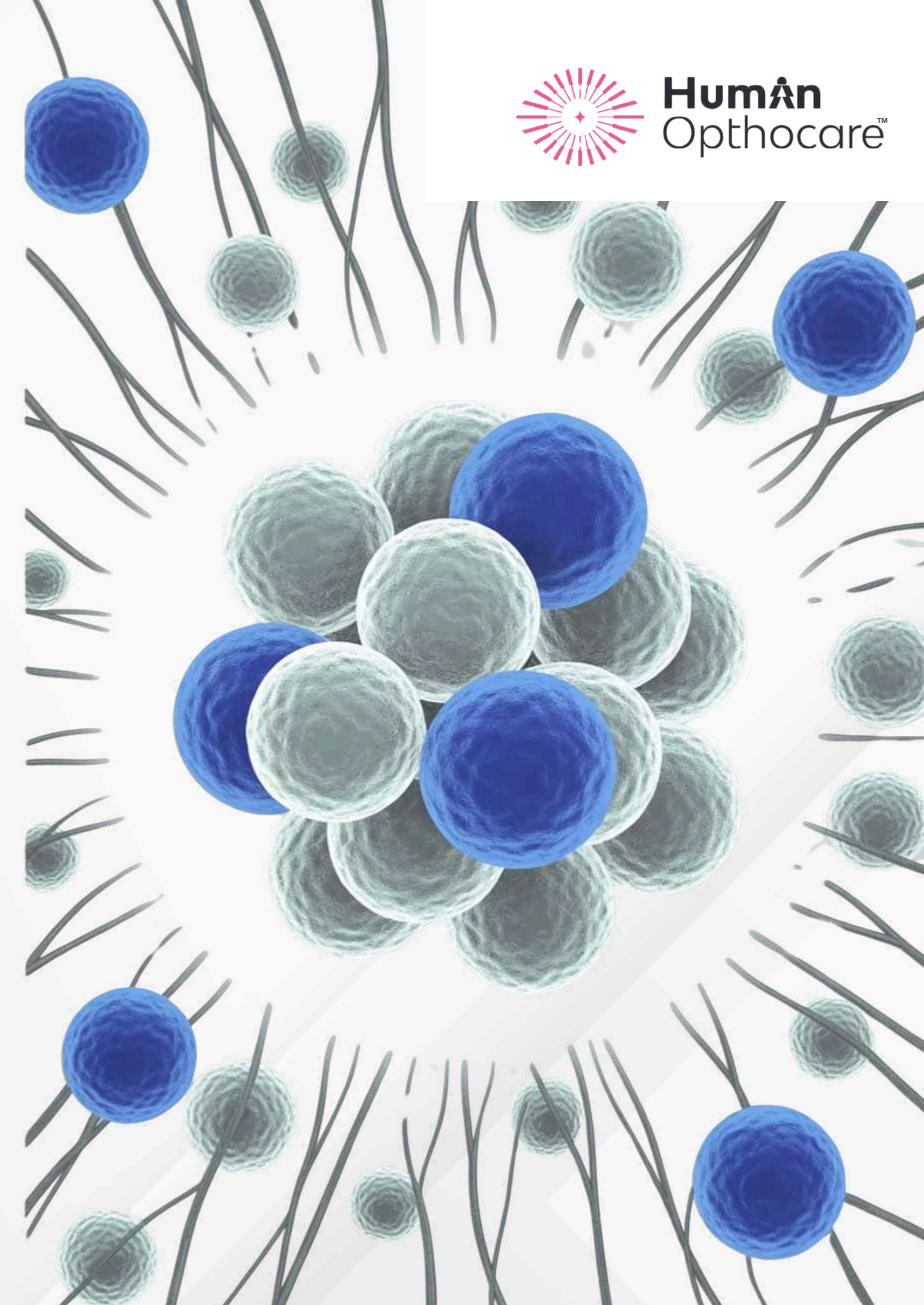


Long duration of action

Ensures symptom-free comfort throughout the day



Once-daily dosing for maximum compliance



Indications

OLOTADIN is recommended for:



Seasonal Allergic Conjunctivitis (SAC)

Treats symptoms during specific seasons when allergens are prevalent

Perennial Allergic Conjunctivitis (PAC)

Manages symptoms that occur throughout the year

Ocular itching, redness, and watering due to allergy

Relieves common allergic eye symptoms

Supportive therapy in allergic eye disorders

Complements treatment regimens for various allergic conditions

Clinical Advantages

Key Benefits of OLOTADIN:

Rapid relief from ocular itching & redness

Quick symptom resolution for patient comfort

Dual action – antihistamine + mast cell stabilization

Comprehensive approach to allergy management

Long-lasting effect with once-daily use

Convenient dosing schedule for better compliance

Excellent safety & tolerability profile

Minimal side effects for patient comfort

Improves quality of life in allergic patients

Enhances daily functioning and comfort



Comparison with Conventional Antihistamines

Parameter	OLOTADIN (Olopatadine)	Conventional Antihistamines
Onset of Action	✓ Rapid	⚠ Moderate
Duration	✓ Long-lasting (24 hrs)	✗ Short-lived
Mast Cell Stabilization	✓ Yes	✗ No
Dosing	✓ Once Daily	✗ 2–4 Times Daily
Tolerability	✓ High	⚠ Variable

Dosage & Administration

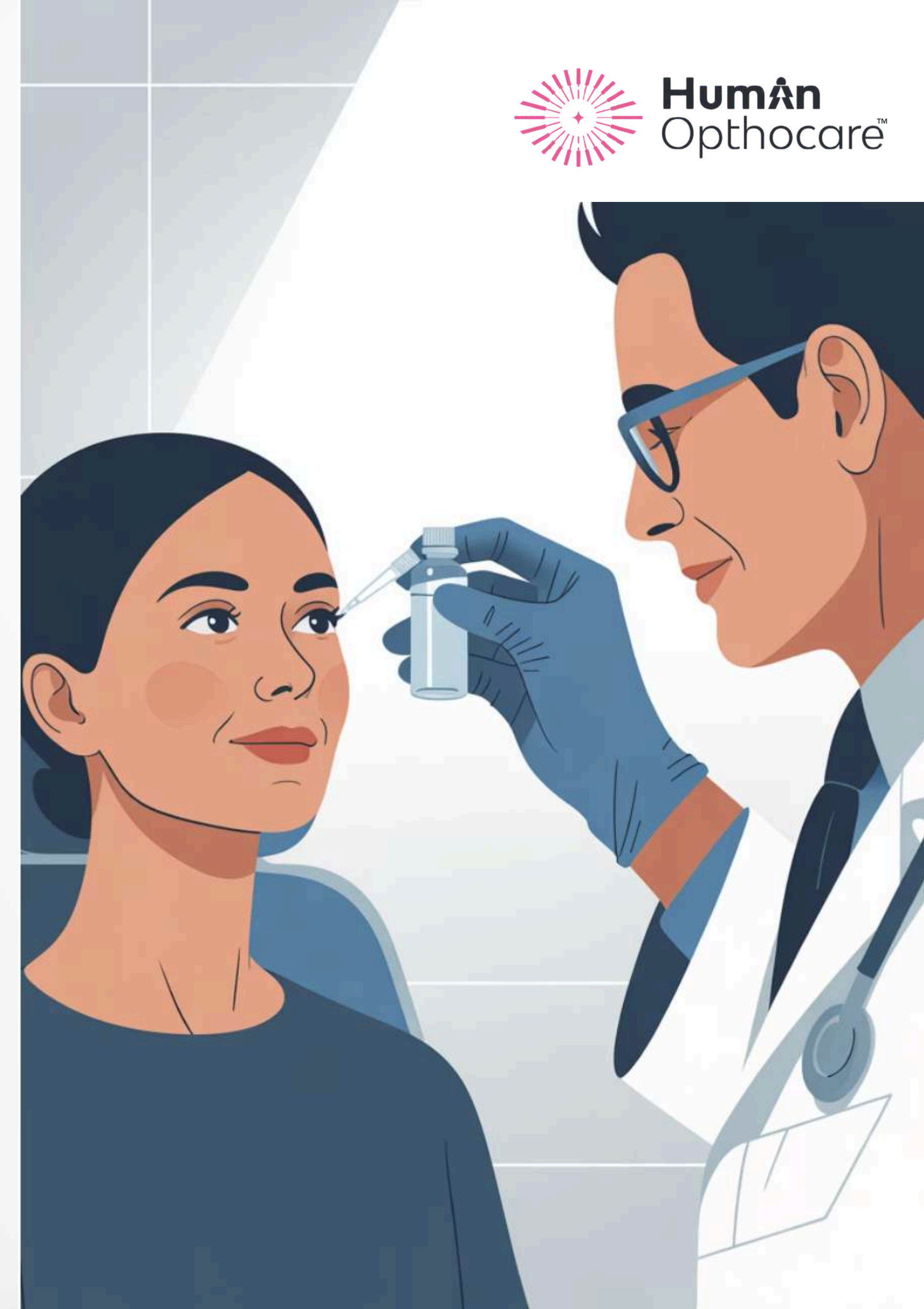
Dosage: 1 drop in the affected eye(s) once daily.

Important Instructions

- Not for contact lens wearers during active allergy
- Shake well before use
- For topical ophthalmic use only

Administration Tips

- Wash hands before application
 - Avoid touching tip to eye or any surface
- Close eye gently after application



Safety & Tolerability

Well-Tolerated in Clinical Studies

Possible but uncommon side effects:

- Mild transient eye irritation
- Dry eye sensation
- Headache (rare)

Contraindicated in:

- Known hypersensitivity to Olopatadine or any component of the formulation

Safety Profile

OLOTADIN has demonstrated an excellent safety profile in extensive clinical trials, with minimal adverse effects reported.



Why Prescribe OLOTADIN?

Doctor's Choice For:



Effective management of allergic conjunctivitis

Comprehensive solution for ocular allergy symptoms



Dual-action relief – fast & sustained

Both immediate and long-term symptom control



Once-daily dosing ensures patient compliance

Simple regimen improves treatment adherence



Safe, reliable, and well-tolerated formulation

Minimal side effects for better patient experience



Backed by trust of HumAn Opthocare

From a reputable pharmaceutical company



Contact Us


Fluromac is a potent ophthalmic corticosteroid for targeted inflammation relief with a strong safety profile when used judiciously.

Use with clinical discretion, especially in high-risk ocular conditions.

For medical queries or collaboration:

HumAn Opthocare – A Division of Human Biolife India Pvt. Ltd.

 www.humanopthocare.com

 **+91 6283361749**

